

For F&B Manufacturing

IPET

INTEGRATED PROJECTS IN ENGINEERING AND TECHNOLOGY

Building Clients' Trust and knowing How to Keep it!



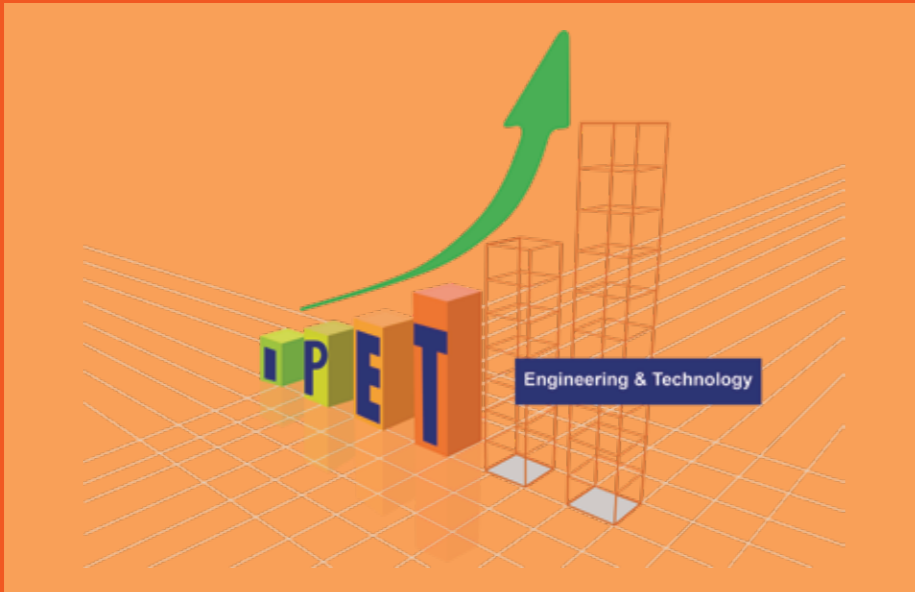
2026

Providing expert process engineering and integration for Food & Beverage manufacturing.



D-U-N-S Number : 84-920-5456





01 WHO WE

PROCESS ENGINEERING & INTEGRATION

IPET has a successful experience in the design, integration, management, and construction of different processes' plants for Food & Beverage Manufacturers. We have established a reputation for quality and value

Our Core Strengths:

- **Expert Teams:** We form our teams with the necessary skills, defining clear roles and establishing open channels to communicate, care, coordinate, and resolve issues efficiently.
- **Technical Excellence:** The team at IPET are experts in the design, manufacture, and installation of high-quality stainless-steel fabrication pipework systems.
- **Comprehensive Integration:** We specialize in process MEP (mechanical, electrical, and automation) systems, networking, hardware and software automation, Factory Acceptance Tests (FAT), Site Acceptance Tests (SAT), and Process Validation.
- **Global Collaboration:** By collaborating with our global partners—who are top leaders in the industry—we offer affordable and sustainable solutions to our clients in the market.
- **Proven Track Record:** We have proven track records of delivering successful turnkey projects to our reputable clients in the food & beverage industry.



02 OUR MISSION

RISK-BASED DESIGN & BUILD

We work closer with our clients through every project phase, from idea generation and business planning to execution and start-up. We maintain a special focus on providing sustainable and cost-effective solutions by reducing and upcycling process waste.

CORE OBJECTIVE

Providing process engineering and integration for F&B manufacturing, capsulated with proofed sustainable solutions.

Strategic Approach

Delivering risk-based design and build services tailored for food and beverage manufacturing.

Client Commitment

Building clients' trust and knowing how to keep it by working closer with our clients throughout every phase of the project.

Sustainability & Value

Maintaining a special focus on providing sustainable and cost-effective solutions, achieving cost reduction through reducing process waste and upcycling waste.

GLOBAL COLLABORATION

Collaborating with our global partners, top leaders in industry, to offer affordable and sustainable solutions to our clients in the market.

03 OUR VISION



BUILDING CLIENTS' TRUST

We implement regional standards in products and services.



Sustainable Focus

Driving cost reduction through actively reducing and upcycling process waste.



Turnkey Delivery

Building upon a proven track record of delivering successful, integrated turnkey projects.



Global Collaboration

Collaborating with industry leaders to offer top-tier, affordable solutions in the market.

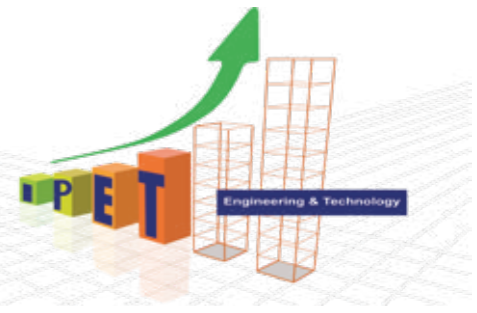


Regional Standards

Implementing the highest regional quality standards across all products and services.



04 WHAT WE DO

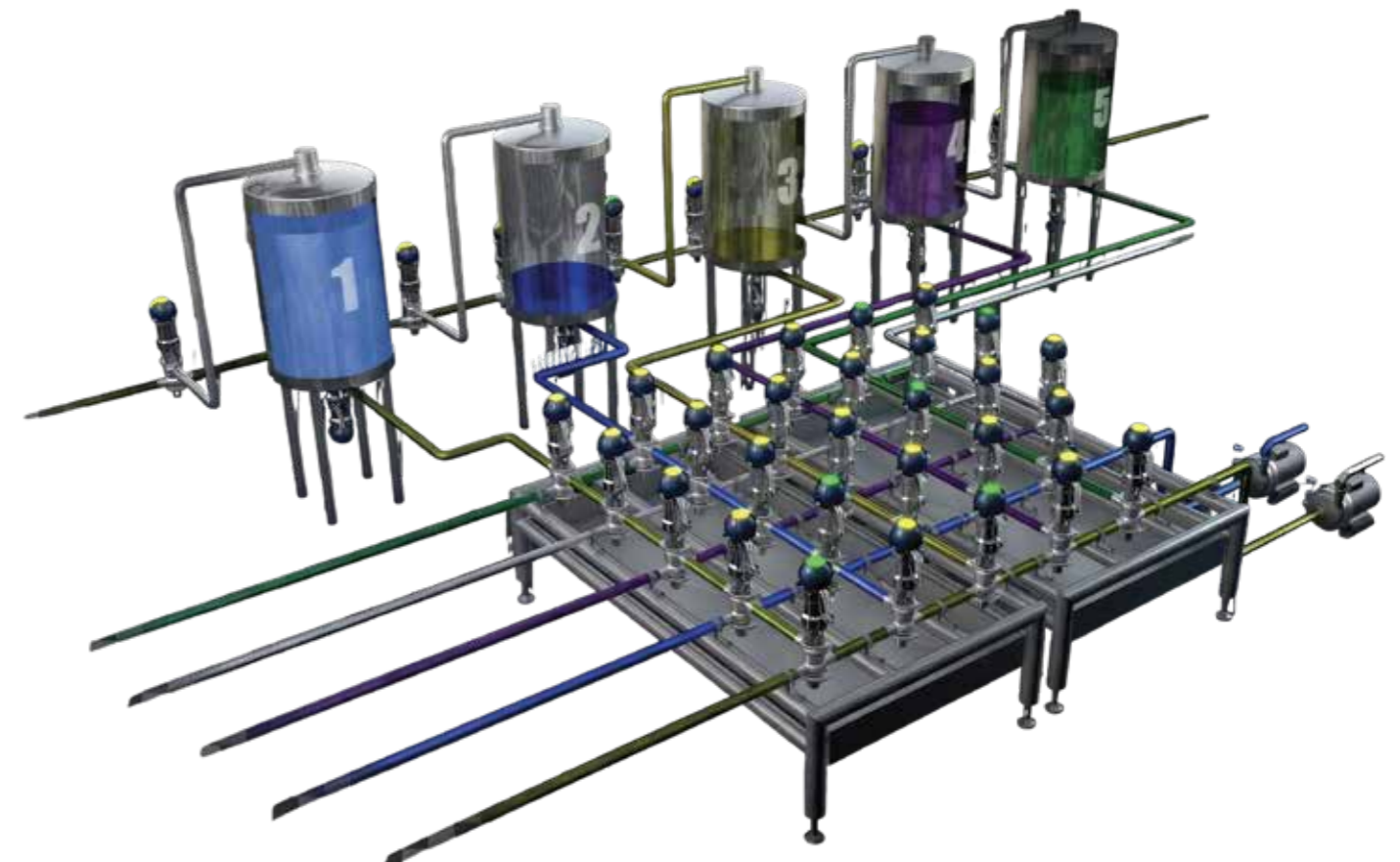


PROCESS ENGINEERING & INTEGRATION

IPET has a successful experience in the design, integration, management, and construction of different processes' plants for food and beverage manufacturers. We work closer with our clients by guiding projects through seven comprehensive phases: Idea Generation, Business Planning, Concept Design, Basic Design, Execution, Start-up, and Evaluation.



We aim to be the premier integrated engineering partner for the Food & Beverage industry. Our vision is to continually implement regional standards in our products and services, ensuring that we offer affordable, customized, and sustainable solutions on a turnkey basis.



05 OUR SERVICES



TURNKEY & INTEGRATED SOLUTIONS

The team at IPET are experts in the design, manufacture, and installation of high-quality stainless-steel fabrication pipework systems and MEP (mechanical, electrical, and automation) processes. We have proven track records of delivering successful turnkey projects to our reputable clients in the food and beverage industry.

1

End-to-End Project Lifecycle Management

We guide our clients through a comprehensive, risk-based design and build process tailored for the Food & Beverage manufacturing sector. Our complete project lifecycle spans seven critical phases:

- Phases 0 & 1: Idea Generation and Business Planning.
- Phases 2 & 3: Concept Design and Basic Design.
- Phases 4, 5 & 6: Execution, Start-up, and continuous Evaluation.

MEP, Automation, & Control Systems

2

Core Process Engineering & Fabrication

Our technical teams are uniquely equipped to handle complex industrial builds from the ground up.

- Process Mapping: We develop highly detailed Process Diagrams, capacity mapping, and Piping and Instrumentation Diagrams (P&ID).
- Complete Execution: Our services cover full planning, procurement, installation, and construction.
- Sanitary Fabrication: We specialize in the design, manufacture, and installation of high-quality stainless-steel fabrication and pipework systems.

3

We ensure that your plant operates at peak efficiency with state-of-the-art technological integration.

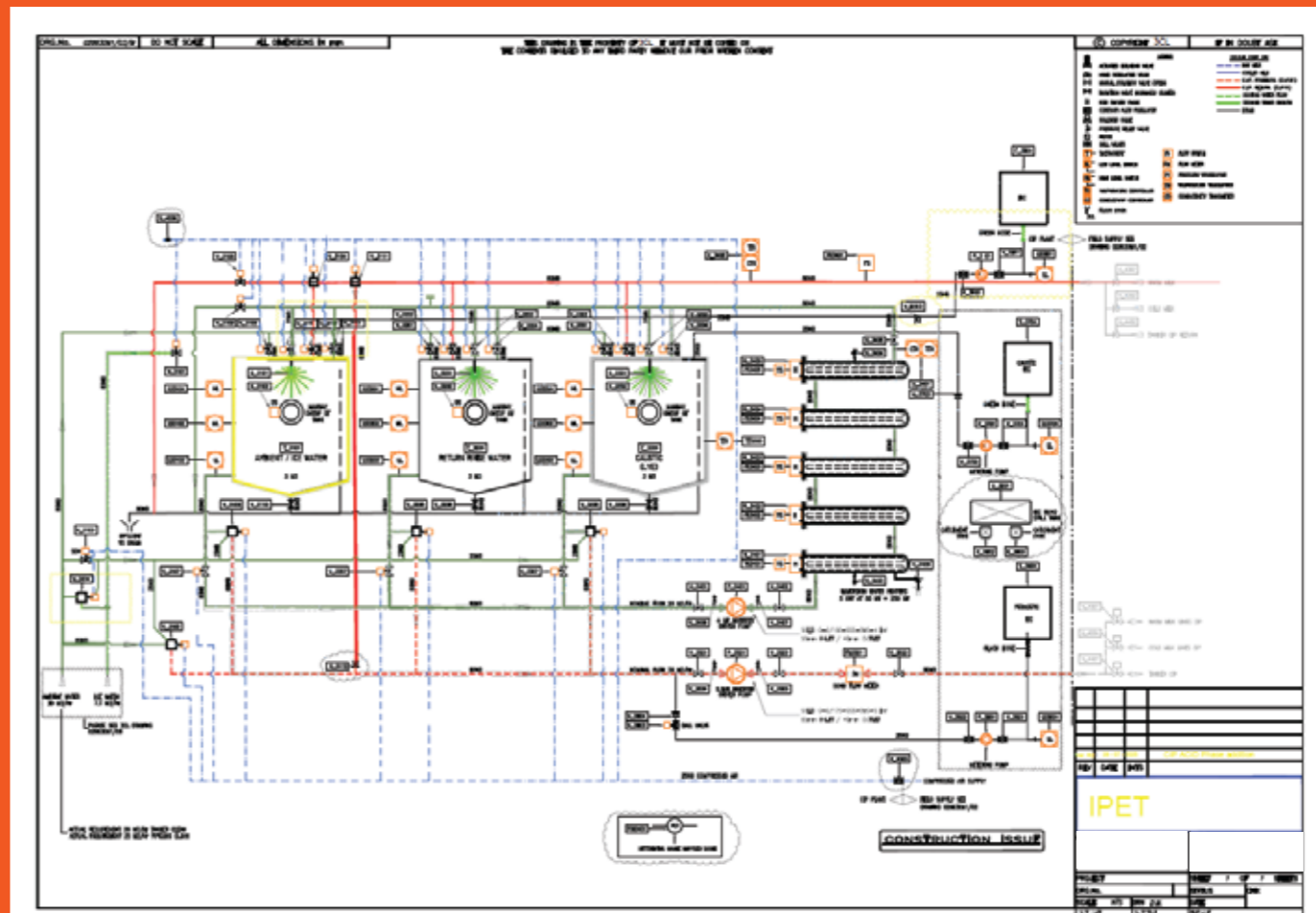
- MEP Integration: We provide full Mechanical, Electrical, and Automation (MEP) system integration.
- Digital Transformation: Our teams deploy advanced networking and robust Automation Hardware (H/W) and Software (S/W) tailored to your specific shop floor needs.

4

Testing, Validation, & Sustainability

Quality assurance and environmental responsibility are built directly into our engineering methodology.

- Rigorous Testing: Every system undergoes stringent Factory Acceptance Tests (FAT) and Site Acceptance Tests (SAT).
- Compliance: We conduct thorough Process Validation to guarantee system integrity and industry compliance.
- Cost & Waste Reduction: We maintain a special focus on providing sustainable, cost-effective solutions by actively reducing process waste and engineering systems for upcycling waste.



MISSION

PROCESS
ENGINEERING & INTEGRATION

Providing expert process engineering and integration specifically for Food & Beverage manufacturing, encapsulated with proven, sustainable, and cost-effective solutions.

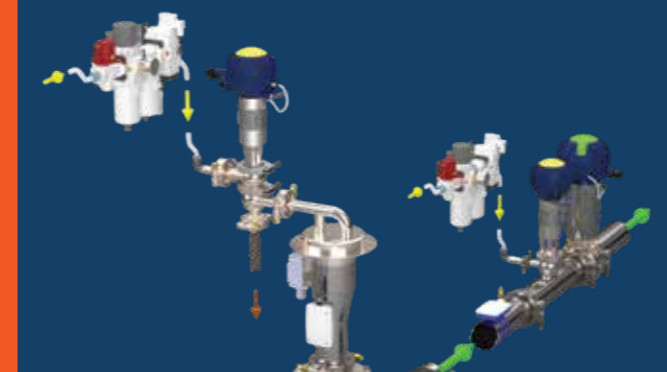


YOUR GLOBAL PARTNER IN PROCESS AUTOMATION AND INDUSTRIAL IT



- Increase Yields
- Cut Waste
- Speed Up Changeovers
- Save Water and Energy
- Reduce Cross- Contamination

“ HPS is recognized as the world's leading expert in liquid product recovery, commonly known as pigging systems.



THE HPS DIFFERENCE

HPS are the world's leading liquid product recovery (pigging) specialists. We provide simple, efficient systems that deliver results and offer technical excellence and performance.

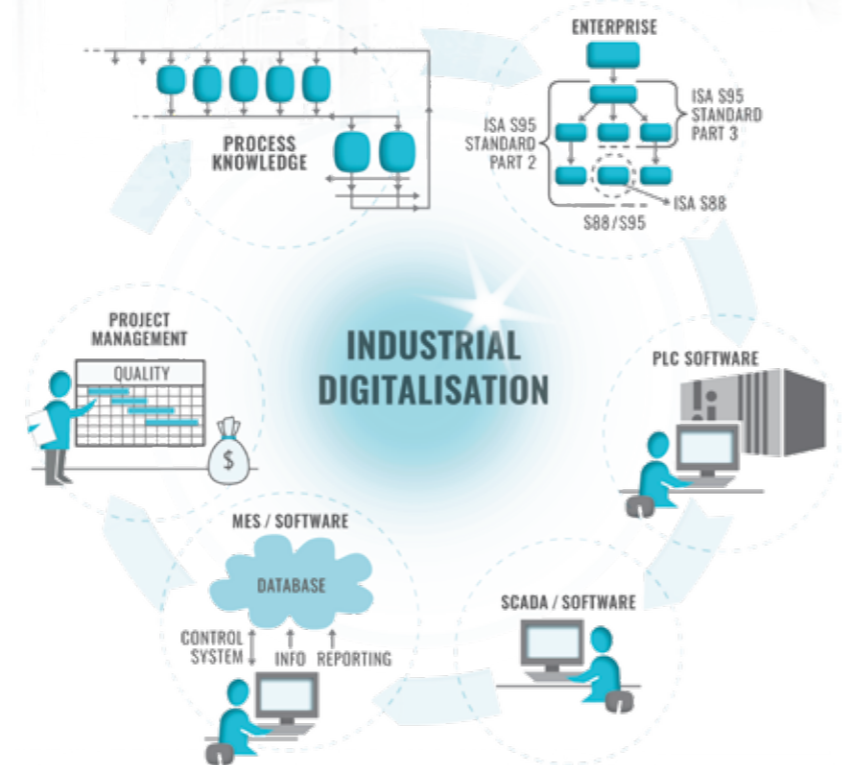
From design and installation to support and after-sales care, our proven technology delivers a high return on investment and rapid payback.

This is through increasing yields and capacity, reducing waste, speeding up processing and changeovers, and lowering contamination risks. It also improves environmental sustainability.



The HPS systems resulted in a clear increase in product yields, equating to 48,000 extra cans per week.

Coca-Cola



HEALTH CHECK OF YOUR CONTROL SYSTEM



“ Au2mate has accumulated expert knowledge on the processes in the sectors we serve.

- ✔ Au2mate's industrial IT/MES solutions ensure complete integration from ERP to the shop floor
- ✔ Au2mate's secure that all projects are specified, developed and implemented in close cooperation with the customer
- ✔ Au2mate Academy is a knowledge centre for dairy automation that offers education and training of managers, Operators and technicians in the dairy industry.

“ Au2mate's secure that all projects are specified, developed and implemented in close cooperation with the customer



Au2mate's systems utilize Data Analysis, Overall Equipment Effectiveness (OEE) tracking, Manufacturing Execution Systems (MES), Energy Optimization, Artificial Intelligence (AI), and Traceability.

HIGH EFFICIENCY,
HIGH PERFORMANCE,
HIGHLY ENGINEERED

Ampco Pumps Company provides highly engineered solutions tailored for advanced mixing and blending processes.

- Mixing and Blending
- ADU Sanitary Drum Unloading
- Circumferential Positive Displacement pump
- ROTARY LOBE PUMP
- CENTRIFUGAL PUMP



**ADU FULL UNIT
BLOCK OUT**



**AL SERIES
ROTARY LOBE PUMPS**



ADU FULL UNIT



**PM MIXER
RIGHT**



**ZP3 SERIES
PATENTED DESIGN,
LESS DOWNTIME**



**ZP3A SERIES
ASEPTIC PUMP LINE**



ZP1/ZP2 SERIES



**ZP1+ SERIES
PATENTED DESIGN,
EASY MAINTENANCE**



**AC/AC+ SERIES
ECONOMICAL PUMP**



**LC/LD/LF/LM/LH SERIES
HIGH EFFICIENCY PUMP**



**SP SERIES
LIQUID RING PUMP**



**JET SHEAR
JS300**



**JS125
ON STAND**



JS400



**JET MIX
JM125**



**SHEAR MAX
(HIGH SHEAR MIXER)**



**SBI SERIES
(SHEAR BLENDER)**



**SBH SERIES
(SHEAR PUMP)**



**WINE, MUST
&
YEAST CART**



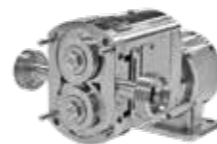
**ROLEC
DH45**



**SHEAR MAX CART
(HIGH SHEAR MIXER)**



**BORNEMANN SLH
SERIES
SANITARY TWIN
SCREW PUMP**



**ZP4
MOST EFFICIENT
COMPACT
SANITARY PUMP**



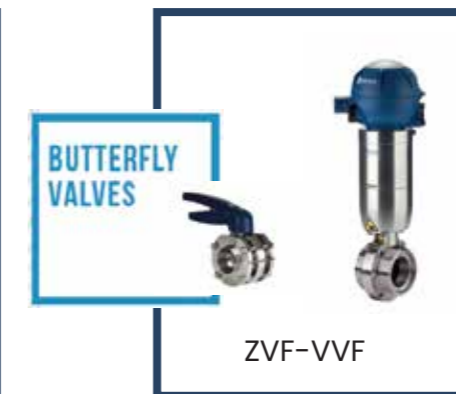
DH90/ DH250/DH45

BARDIANI VALVOLE



QUALITY, PASSION, RELIABILITY

- Bardiani Valvole specializes in the design and manufacture of top-tier hygienic valves.
- A hallmark of their durability and sanitation is that Bardiani valves are machined entirely from solid steel bars with absolutely no welds.
- Global Certifications: Their products meet the highest industry standards and are fully 3A, EHEDG, and FDA Certified.





Daniatech



The Next Generation of High-Shear Mixing Solutions

- Daniatech leads the industry with next-generation, high-shear mixing solutions tailored for complex processing.
- They provide highly flexible, safe, and innovative powder handling systems.
- The company drives continuous innovation in thermal and UHT (Ultra-High Temperature) processing technologies.



POWDER AND MIXER



BALANCE TANK

ABOUT DANIMATECH

NEXT GENERATION PROCESS EQUIPMENT

Daniatech designs, develops, and delivers advanced technical solutions and high-quality equipment primarily for the food, beverage, and dairy processing industries worldwide.

With extensive industry experience and a strong focus on innovation, we help customers optimize production efficiency and operational reliability.

Our customised solutions ensure our customers state-of-the-art equipment that handles even the most complex products.

T E S T M I X E R S



LABMASTER



LIQUIDMASTER

Ante BV

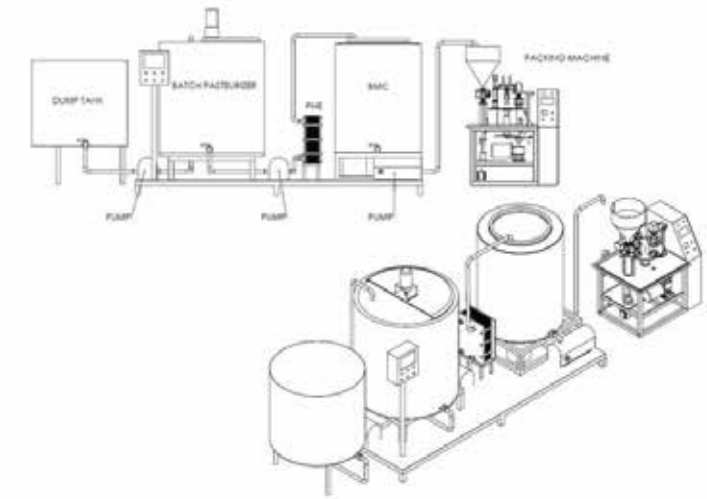
New and used dairy processing equipment



Ante BV is a specialized provider of both new and used equipment specifically tailored for milk and dairy processing.



DAIRY PROCESSING EQUIPMENT



Drawing Min Factory 500L Milk Yoghurt Juice cup filling and sealing

Icecream Production



Batchpasteurizer
500L



Homogenizer
500 LPH



Aging Vat/ Cooling Tank
500L



Continuous Freezer
500 LPH



Milk Transfer Pump
&
Inline Filter

Fresh Milk & Yoghurt Production



Bulk Milk Cooler
500L



Batchpasteurizer
500L



Pouch Filling
Machine



Cold Room
1,2 x 2,0 x 2,0m

Cheese Production



Bulk Milk Cooler
500L



Cheese Vat
500L



Cheese Press
Stamp



Cold Room
1,2 x 2,0 x 2,0m

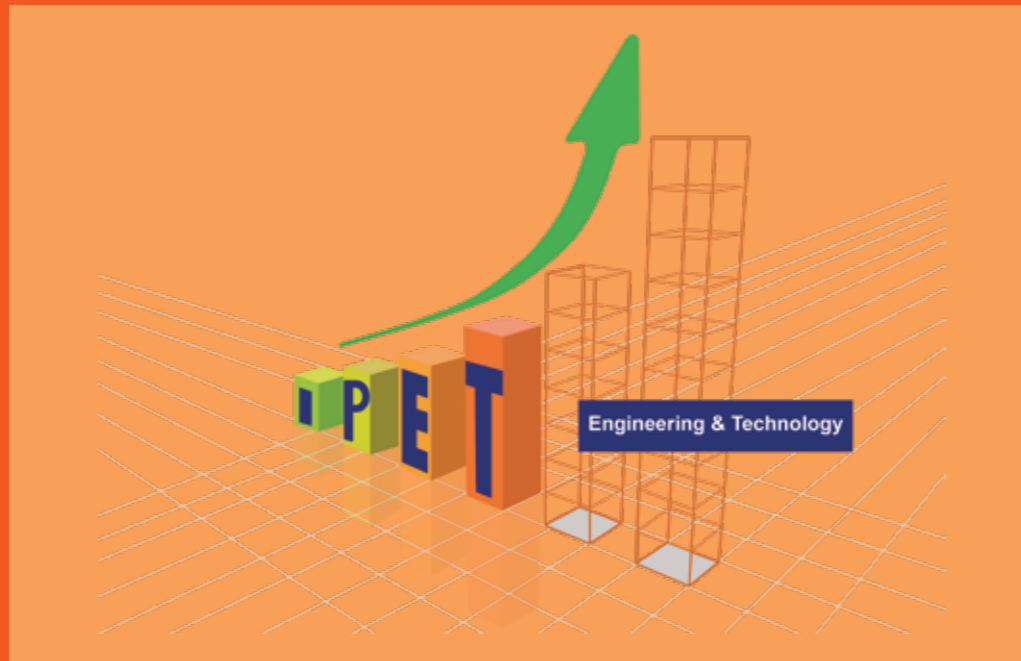
Butter Production



Cream Separator
500 LPH



Butterchurn
300L



IPET - Integrated Projects in Engineering & Technology
 Providing expert process engineering and integration for Food & Beverage manufacturing. We deliver turnkey, sustainable, and cost-effective solutions designed to reduce process waste, optimize production, and build lasting client trust.

Email: MAL.IPET@outlook.com
 Email: MAL@ipet-group.com
 Email: INFO@ipet-group.com
 Location: Seouf Shamaa, Alexandria, Egypt
 Phone: +20 12 77652626
 www.ipet-group.com



Our Partners



OUR TRUSTED CLIENTS ACROSS THE GLOBE